

Main Auditorium

Auditorium Technical Specifications

Updated 20 July 2016

Technical Co-ordinator: Gary Kennedy

P: (02) 4429 5751

M: 0421 229 640

E: techs@shoalhavenentertainment.com.au



1 Contents

1	Contents	2
2	Venue Capacity	3
3	Stage Measurements.....	3
4	Power Distribution.....	3
5	Rigging	3
6	Fly System.....	4
7	In House LX.....	5
7.1	Standard LX Rig	6
7.2	Touring LX.....	7
8	Staging	7
9	Pyro / GAS / Confetti	7
10	Projection.....	7
11	Comms	7
12	Audio System	8
13	Dressing Rooms	9
14	Other Equipment.....	9
15	Load in.....	9
15.1	Load in Rules	9
16	Load Out.....	10
16.1	Next Day Pickups	10
17	House Rules	10

2 Venue Capacity

- Seated maximum capacity: 914
- Standing: Level 1 and 2 flat floor: 950

3 Stage Measurements

Proscenium width	15000mm
Standard width between legs	12000mm
Proscenium height	7000mm
Standard border height	5500mm

Depth from front of stage:	
To upstage edge of proscenium	1200mm
To Fire Curtain	1300mm
To FOH Curtain	1800mm
To LX 1	2500mm
To LX 2	5400mm
To LX 3	7900mm
To LX 4	10000mm
To Last Fly line	12000mm
To back wall	13200mm

Stage Height from house floor	800mm
Stage surface	Masonite
Stage distributed load limit	750Kg/m ²
Stage Point Load limit	450kg

4 Power Distribution

1x 100amp supply via 6 * 40amp Wilco located at each corner of the stage and 2 on stage left
1 x100amp hardwire connection located stage left.

Only house electrician is permitted to connect and disconnect 100amp supplies.

“Green Power”

“Green Power” refers to dedicated sound power separated from other power supplies at initial switch board. “Green Power” GPOs are located throughout the building.

5 Rigging

All rigging points are to be installed by venue riggers only. The flying of any PA needs to be requested in writing.

- **RB1:** Grid beams over stage, upstage of proscenium beams at 3m centres running up and down stage 11700mm above stage surface. Maximum capacity 235 kg/m including flying system. No point rigging permitted
- **HB2:** Beams above forestage at right angles to proscenium at 3m centres 1500kg each.
- **LX4:** 4 x Electric winches (max capacity that can be added to the bar 400kg).
- **Roof Trusses:** Above Auditorium

The bottom chord of each truss is rated for a one only point load of 1000kg.

6 Fly System

- The Shoalhaven Entertainment Centre does not have a fly tower.
- Only venue personnel can operate the fly system.
- A single purchase counterweight system operated from stage level stage right (OP).
- 10 lines in different depths of the stage are usually available for facilitating touring soft goods.
- Touring LX requiring flylines must submit a LX plot and hanging plot 4 weeks prior to event date
- All Battens are 48mm OD pipe

Line No.	Distance from front of Stage (mm)	Cradle Capacity (kg)	Standard Hang
1	1800	300	House curtain
2	2000	300	Border
3	2200	300	
4	2500	400	LX 1
5	3500	300	Legs
6			Uncommissioned
7	3900	300	Border
8	4900	300	Legs
9			Uncommissioned
10	5400	400	LX2
11			Uncommissioned
12			Uncommissioned
13	6000	300	
14	6400	300	
15	6800	300	Mid Tabs
16	7400	300	Border
17	7600	300	
18			Uncommissioned
19	7900	400	LX 3
20			Uncommissioned
21			Uncommissioned
22	8900	300	Legs
23	9100	300	
24	9300	300	Border
25			Uncommissioned
26			Uncommissioned
27	10000	400	LX 4
28	10200	300	
29	10600	300	
30	10800	300	
31	11200	300	
32	11500	300	Upstage tabs
33	11800	300	Cyclorama
34	12000	300	

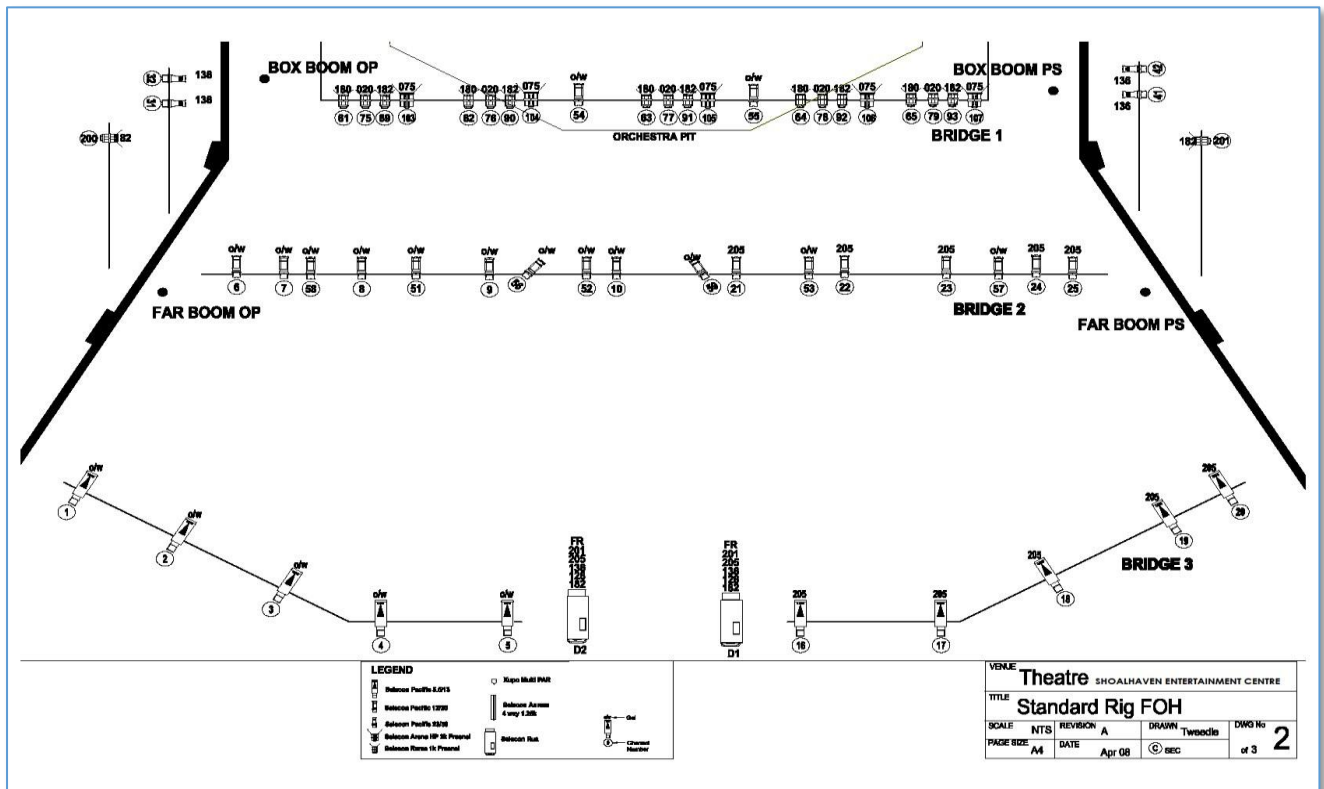
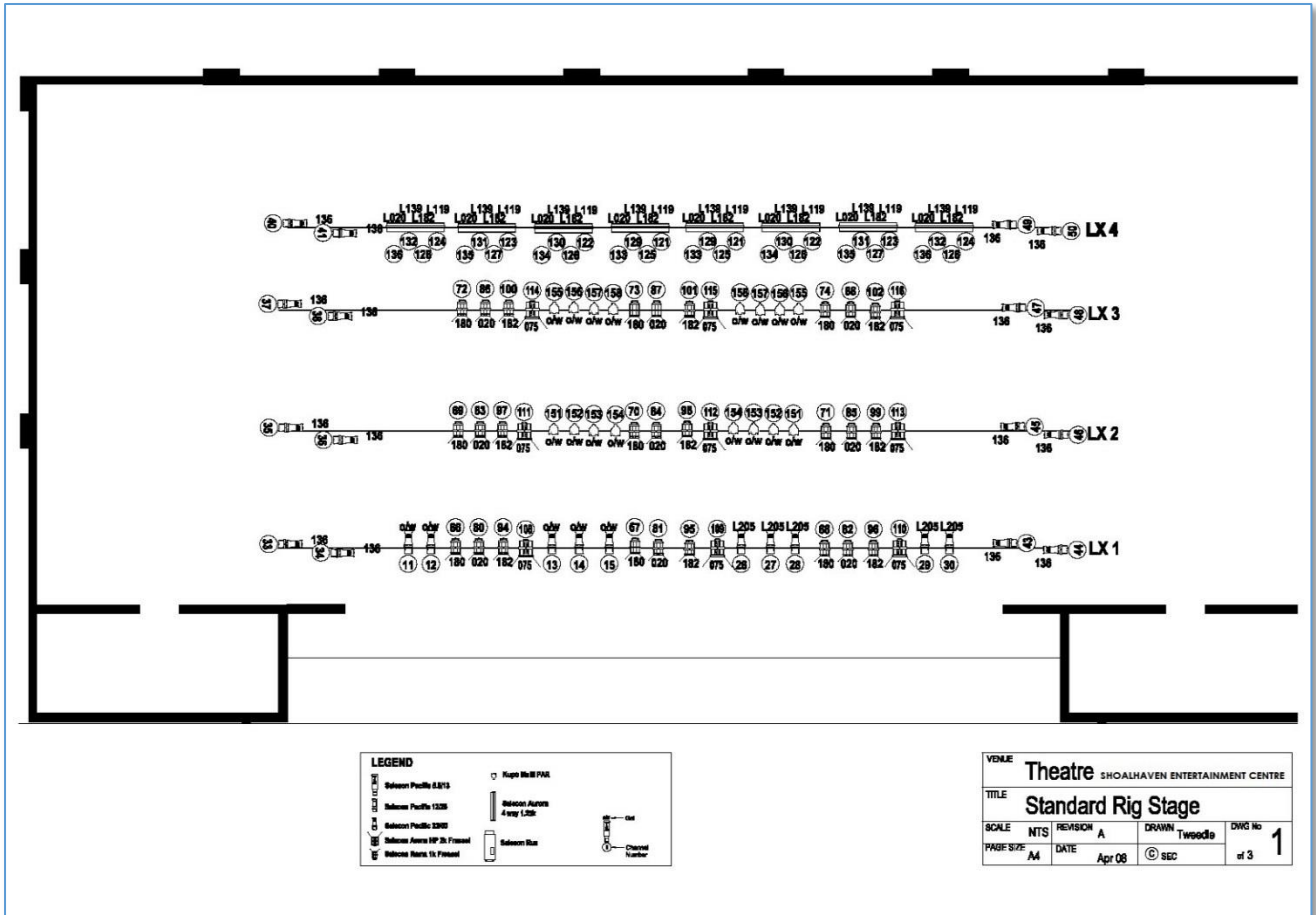
7 In House LX

The Standard rig is set with a well covered 4 colour wash, gobo break up wash and sufficient profiles to cover any standard concert.

Control	LSC Clarity LX300 console and VX 20 wing board
Dimmers	Bytecrafft Solution 12 10amp 132 x dimmers Bytecrafft Solution 6 20amp 12 x dimmers
FOH Bridge 1	4450 from setting line 24 x dimmable 10A circuits 2 x dimmable 20A circuits
Lamps	2 x Selecon Pacific 12 / 28 profiles 15 x Selecon Rama HP1.2K fresnels with barndoor 5 x Selecon Arena 2K fresnels with barndoor
FOH Bridge 2	17 x Selecon Pacific 12 / 28 profiles
FOH Bridge 3	10 x Selecon Pacific 5 / 12 profiles
LX 1	1300 from the setting line 31 x dimmable 10A circuits 4 x dimmable 20A circuits
Lamps	14 x Selecon Pacific 23 / 50 profiles 9 x Selecon Rama HP 1.2K fresnels with barndoor 3 x Selecon Arena 2K with barndoor
LX 2	4000 from the setting line 31 x dimmable 10A circuits 4 x dimmable 20A circuits
Lamps	4 x Selecon Pacific 23 / 50 profile 9 x Selecon Rama HP 1.2K fresnels with barndoor 3 x Selecon Arena 2K with barndoor 8 x Kupo Multipar
LX 3	6800 from the setting line 31 x dimmable 10A circuits 4 x dimmable 20A circuits
Lamps	4 x Selecon Pacific 23 / 50 profiles 9 x Selecon Rama HP 1.2K fresnels with barndoor 3 x Selecon Arena 2K with barndoor 8 x Kupo Multipar
LX 4	8700 from the setting line 31 x dimmable 10A circuits 4 x dimmable 20A circuits
Lamps	4 x Selecon Pacific 23 / 50 profile 8 x Selecon Aurora 4 way cyclorama floods
Accessories	8 x M size Gobo holder 18 x A size Gobo holder Gels upon request
Additional LX Options	4 x Chauvet Intimidator Spot LED 350
<i>Additional charges apply</i>	4 x Martin Rush MH6 8 x Pro-shop Quad LED par 7s

Note: No equipment without a current electrical compliant tag can be used in the Shoalhaven Entertainment Centre. In house tagging is available when pre-arranged.

7.1 Standard LX Rig



7.2 Touring LX

Touring moving packages can be rigged on house lines.

Please provide hanging plot and weights 4 weeks prior to event date.

8 Staging

Risers

- 1.8m x 2.4m x 2
- 1.0m x 2.0m x 300mm^(high) x 7
- 1.0m x 2.0m x 600mm^(high) x 7
- 1.0m x 2.0m x 900mm^(high) x 7

Steps and rails to suit the above.

Additional stage risers can be arranged.

9 Pyro / Gas / Confetti

Pyrotechnics are not permitted under any circumstances.

Written approval is required before allowing any pressurized air or gas.

Additional cleaning fees apply for confetti or any loose materials which are found following an event.

Please submit via email any gas or confetti requirements 4 weeks prior to event date to:
techs@shoalhavenentertainment.com.au.

Include details of all AV/FX/technical service providers and a copy of insurance certificates of currency.

10 Projection

- Projector (Rear): Sony FX52. 6000 ANSI Lumens
- Screen 6m wide x 3.5m high
- Cyclorama

11 Comms

Jands Ezicom E-400 Master: Standard positions covered are:

- SX (Bio Box or Level Three) x 1
- LX (Bio Box or Level Three) x 1
- Follow spot x 2
- Stage left at Stage Manager's Desk x 1
- Stage right for fly / monitor operator x 1

12 Audio System

If you are bringing in your own system please email techs@shoalhavenentertainment.com.au and specify if it will be ground stacked, flown or both.

Flown	10 x JBL VRX932LAP line arrays; 5 left and 5 right
Stage Level	4 x JBL VRX918SP subs; 2 left and 2 right of stage
Stage Level	2 x VRX932LAP line arrays; 1 left and 1 right
FOH Control	Yamaha M7CL 48 channel (Default: House centre mix position) Rio 3224-D Audinate Dante-MY16-AUD X 2 DBX Driverack VENU360 Denon DN-C635 CD player
Monitor System	Operated from FOH up to 6 sends with 15 band EQ
Monitor Speakers	10 x JBL PRX512 wedges on stage
Multicore	24 input channels, four returns 2 x 8 Way Multipin drop box
Microphones	6 x Shure SM58 8 x Shure SM57 1 x Shure SM81-LC 2 x Shure SM94-LC 1 x Shure Beta 52-A for kick drum 1 x Beta 91-A 2 x Audio Technica AE 3000 1 x AT U-851 R
Radio Microphones <i>Additional charges apply</i>	10 x handheld SM58 microphones 18 x ULX P4 receivers 16 x ULX belt packs 16 x WH30 headsets 7 x SW302 instrument cables 8 x lapel microphones
DI'S	1 x Radial pro D2 2 x Radial pro 48 4 x Pro Co passive DIs
Stands	5 x round base upright 13 x tripod base tall boom
Stage Monitor System	Total 6 sends from F.O.H console 10 x JBL PRX512 wedges

13 Dressing Rooms

Behind the main theatre stage at stage level are

- 2 large dressing rooms capable of taking 15 people each
- 2 small dressing rooms for 2 people

Each dressing room has a shower and toilets.

Laundry facilities: Washing and drying facilities are located in the loading dock area.

14 Other Equipment

Grand Piano: Bechstein 9' 2" Concert Grand

Additional charges apply

Unique 2 Hazer

Ladders

9m Snorkel

Safety Harnesses

15 Load in

1. Venue access on show day is strictly between the hours specified in the contracted schedule. Crew, associates, deliveries and caterers will not have access to the venue until the start of the load in as specified in the schedule.
2. Coming from Sydney, turn right after Nowra Bridge onto Bridge Rd. Turn left off Bridge Road into Graham St and then left into car park. Bollards can be removed on request (e.g. if trucks are over 5 tonne). On arrival go to Loading Dock door. The Duty Tech will open loading dock door at the start of the load in time specified in the schedule.
3. The loading bay is located on the south western corner of the building (the rear). The dock is 900mm high and a flat load to the stage.

15.1 Load in Rules

- All stage gear must go onstage.
- Absolutely no gear is to be placed or be stored in the auditorium.
- Only the Duty Tech is permitted to unlock any door to any part of the building. No other doors can be used for loading other than the loading dock door.
- The Duty Tech is available from load in to assist with the provisions of the House facilities.

16 Load Out

Load out should be carried out safely and immediately after the performance ends.

16.1 Next Day Pickups

1. Next day pickups are not permissible unless arranged at least 3 weeks prior to event date with. If approved, additional charges may apply.
2. Any such equipment must be left at the loading dock.
3. A pickup time must be pre-arranged and be reconfirmed with the Duty Tech on the night.

17 House Rules

House rules are made so that work in progress is conducted as smoothly and safely as possible whilst maintaining all precautions necessary to safeguard and protect staff, facilities, fixtures, fittings, finishes and property of the venue.

1. All doors, Stage or House must be clear to open or close
2. All FOH equipment must fit within the FOH control area
3. All stage gear must enter via the loading dock door
4. Only house personnel may unlock or open any auditorium or foyer doors
5. No road cases or equipment are allowed to be carried, wheeled or placed anywhere in the auditorium
6. No one is permitted to use a seat, chair, backrest or armrest as a step or to stand upon.
7. Only House Personnel are permitted in the roof or grid area.
8. No smoking is permitted in any part of the venue.
9. Consumption of alcohol and drugs or being in the venue while under their influence is not permitted for any/all contractors and their employees who provide products or services for the Hirer or the Hirer's agents.

Shoalhaven City Council's Drug and Alcohol policy applies for all venue staff, Hirer's contractors and agents and their employees and random drug and alcohol testing may take place during the venue hire period. It is the responsibility of the Hirer to ensure all contractors, agents and employees are familiar with Council's policy.

10. Only qualified riggers may rig
11. Only house operators are permitted to use fly lines
12. Only house operators are permitted to operate follow spots unless prior arrangements are made
13. Do NOT TOUCH stage drapery, do not untie it, do not GAFF it to your gear
14. GAFF tape may only be used on Stage
15. Check with BOH manager if you are un-clear on any house rules or back of house matters.
16. If you need anything at all please ask the BOH manager