

SHOALHAVEN CITY COUNCIL

Main Auditorium

Technical Specifications

Shoalhaven Entertainment Centre

Updated 10 November 2008

Auditorium Technical Specifications

Table of Contents

Seating Capacities	3
Auditorium.....	8
Stage dimensions.....	8
Orchestra Lift/Pit	8
Stage capacity.....	8
Fly galleries	8
Auditorium Floor	8
Loading bay	9
Flying System	9
Hanging Plot Standard Rig	10
Rigging Points.....	11
Drapes	11
Access Equipment	11
Power supply, circuits	12
Temporary Power Supply	12
“Green Power”	12
Theatre Lighting Circuits	12
Lighting Equipment	13
Sound Equipment	13
Projection.....	13
Talkback	13
Miscellaneous	16
Dressing rooms, Green Rooms.....	16
Laundry facilities	16
Music Stands.....	16

Seating Capacities

Auditorium consists of four levels with continuous retractable seating plus removable seating to stage.

Seating capacity with seating over Orchestra Pit: 914

Seating capacity with thrust stage or Orchestra Pit: 838

Centre Mix Position

Level 3 Seats L24-29 + M24-29 (12 seats)

No Thrust

Level 1 & 2 **499**

Level 3 **243**

Level 4 **172**

Thrust stage

Level 1 & 2 **423**

Level 3 **243**

Level 4 **172**

Concert Mode

Levels 1&2 standing only

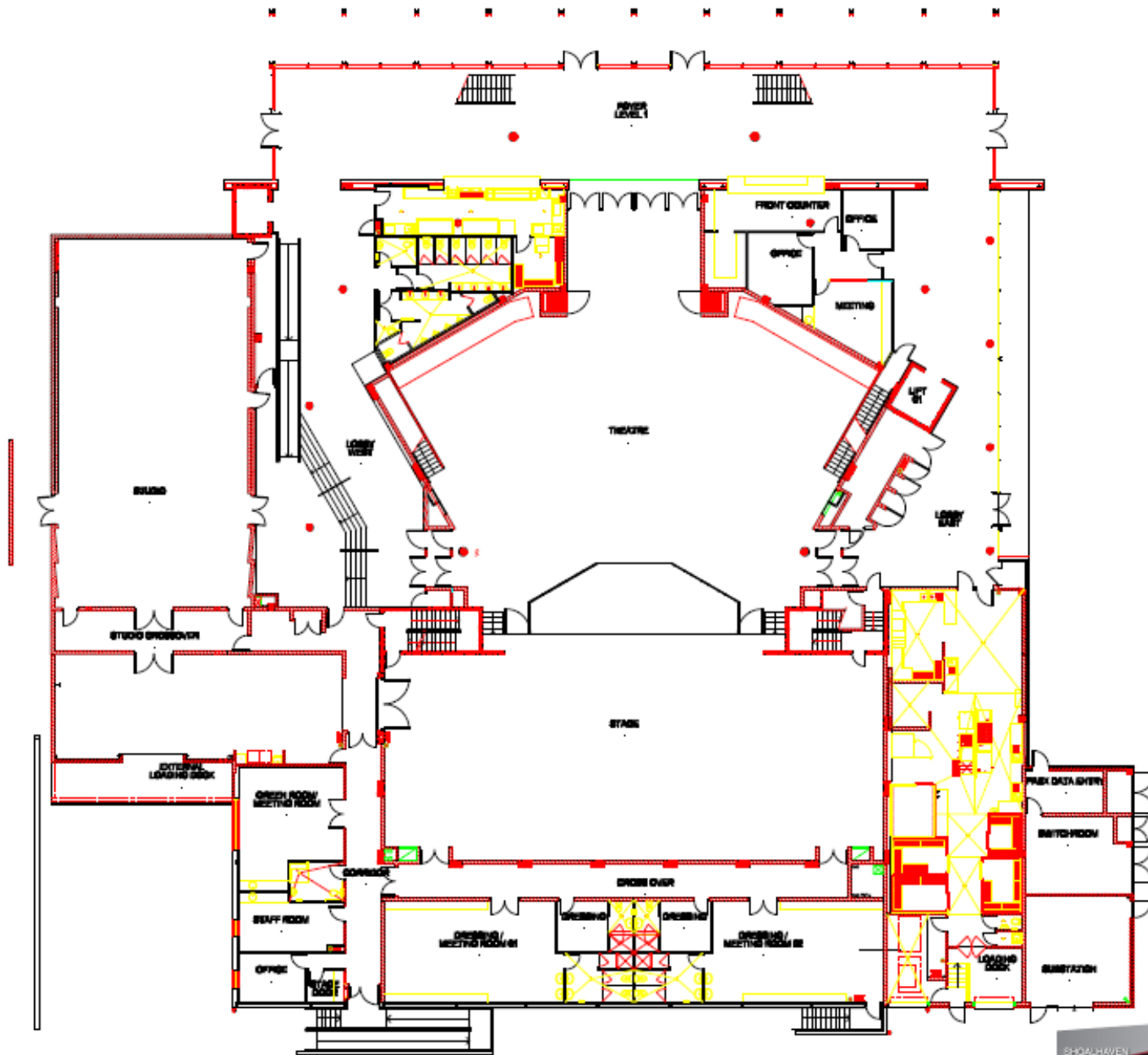
Dinner/Cabaret mode

Level 1 & 2 **315**

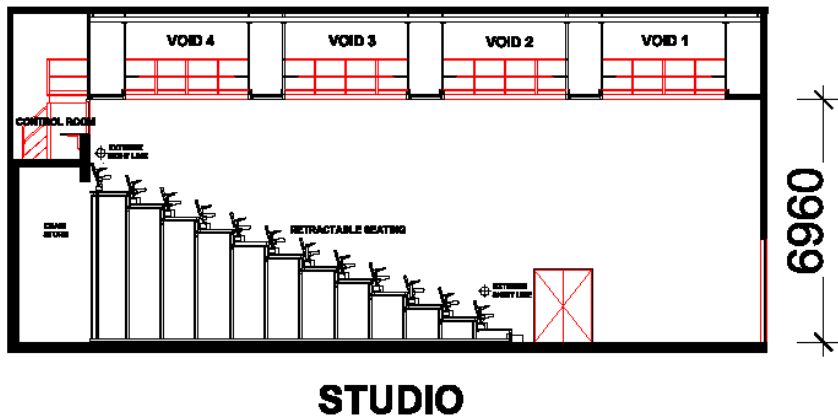
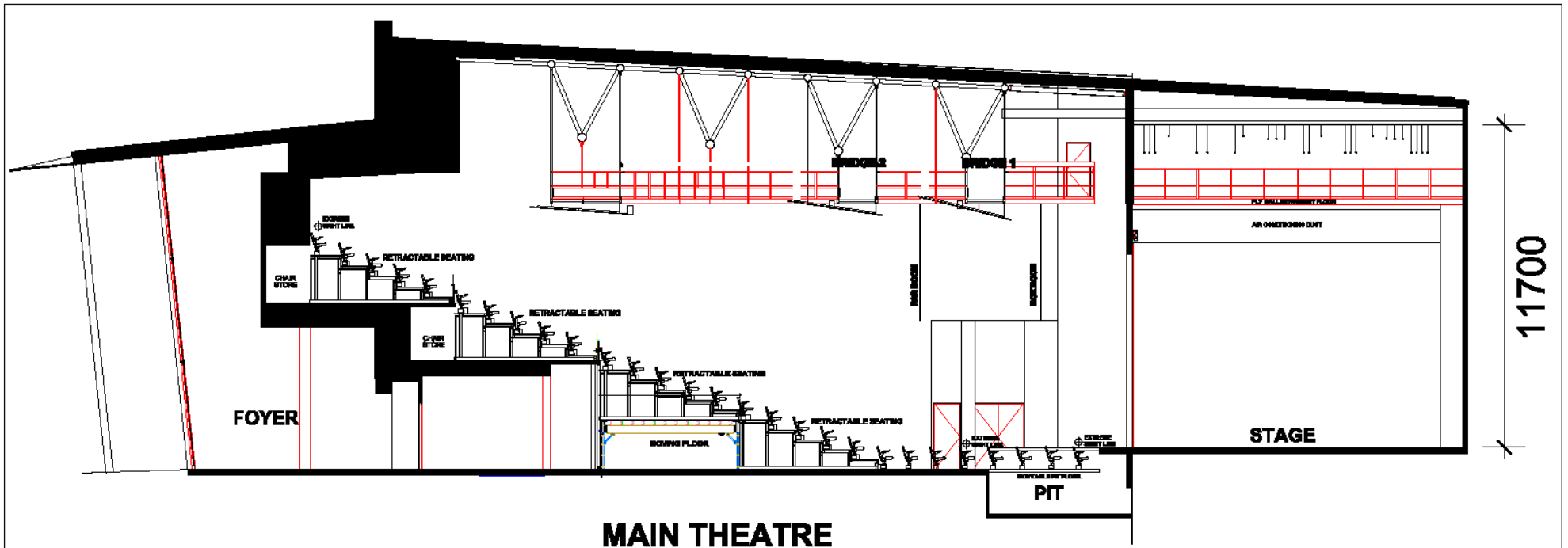
Level 3 **132**

Level 4 **96**

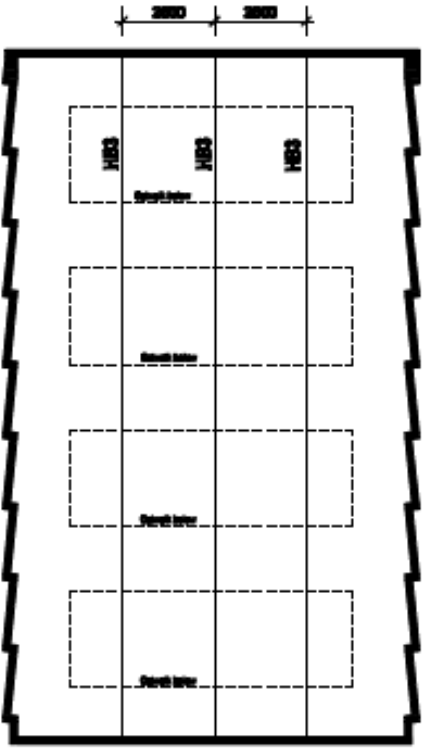
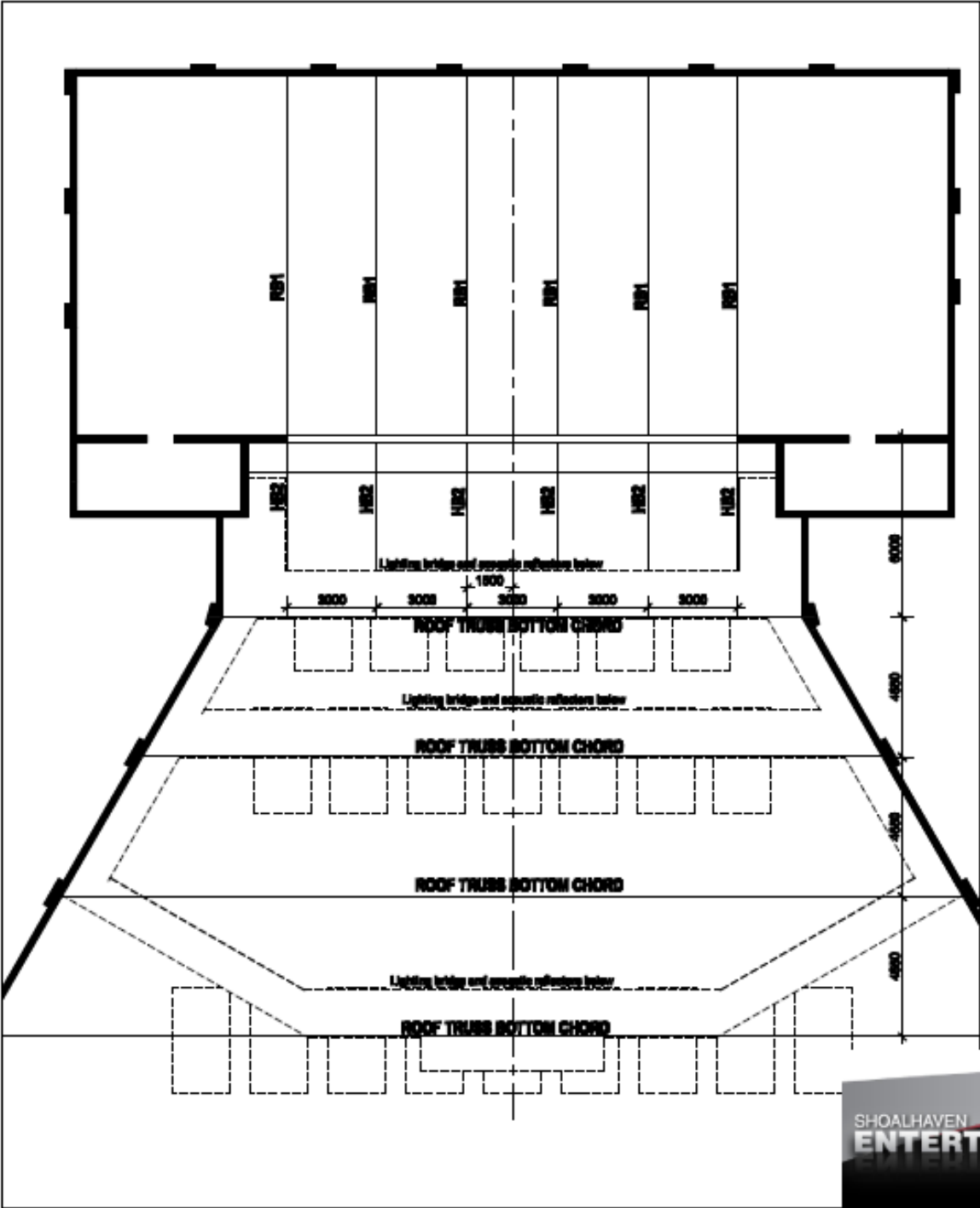
TOTAL 540



SHOALHAVEN ENTERTAINMENT Centre		Entertainment Centre			
PROJECT		Layout			
DATE	1/10	REVISION	A	BY	Tennille
PROJECT NO.	76	SCALE	As Shown	DATE	1/0
					1



		VENUE Entertainment Centre			
		TITLE Sections			
SCALE	NTS	REVISION	A	DRAWN	Tweede
PAPER SIZE	A4	DATE	Apr 08	© SEC	DWG No 3 of 6



VENUE		Entertainment Centre		
TITLE		Rigging Points		
SCALE	NTS	REVISION	A	DRAWN
PROJECT	A4	DATE	Apr 08	© BEC
				DRAWING NO of 7
				4

Auditorium

Unraked stage with a proscenium arch and limited flying facilities. Plywood sandwich sprung floor covered with masonite sheets. Screwing into surface permitted but larger holes to be authorised by Technical Coordinator.

Centre of acting area on timer frame. Perimeter and apron on concrete base.

Stage cross over behind rear wall.

Stage dimensions

Proscenium width	15000
Standard width between legs	12000
Proscenium height	7000
Standard border height	5500

Setting line is upstage edge of proscenium for ease of measurement.

Setting line to US of fire curtain	50
Setting Line to US of House Curtain	600
Setting line to apron edge	1200
Setting line to edge of Orchestra pit	5300
Setting line to first fly line	400
Setting line to upstage fly line	10800
Setting line to rear wall	12000
Centre line to PS wall	14500
Centre line to OP (fly rail)	14000
Stage to underside of roof structure	11700

Orchestra Lift/Pit

A motorised pit lift is operational.

The pit lift may be stopped at any level between basement and stage level.

Standard preset positions are:

Stage:	0
Auditorium:	-800mm
Orchestra Pit:	-2430mm
Basement:	-3500mm

Stage capacity

Stage distributed load limit	750Kg/m ²
Stage point load limit	450Kg

Fly galleries

Fly galleries are located on each side of the stage. No allowance for hanging loads, fly gallery floor designed for 250 kg/m²

Auditorium Floor

Distributed safe working load 750 kg/m². Point load 450kg.

Loading bay

The loading bay is located on the south side of the building. The floor is at stage level for both venues with an approximate drop to ground level of 900mm.

Floor Capacity 750 kg/m²

Flying System

The fly system is a single purchase counterweight system operated from stage level OP
Drift and cradle capacity are shown in table below.

21 lines active including House Curtain

15 x 325kg max drift 11m

6 x 500kg max drift 11.4m

Batten is 48mm OD pipe.

Lighting bars 4 x Electric Pile Winches (1000Kg capacity)

Hanging Plot Standard Rig

Line No.	Distance from Setting Line	Distance between bars	Cradle Capacity	Drift In	Drift out	Standard Hang
1	400	400	500	1500	11300	House Curtain
2	600	200	325	1500	10700	
3	960	360	325	1500	10700	Border
4	1300	340	1000	1000	11300	LX 1
						Large gap
5	2300	1000	325	1500	10700	Screen
6						Uncommissioned
7	2700	400	325	1500	10700	Border
						Large gap
8	3700	1000	325	1500	10700	Legs
9	4000	300	1000	1000	11300	LX2
10						Uncommissioned
11						Uncommissioned
12						Uncommissioned
13	4800	800	500	1500	11200	Tabs
14	5200	400	500	1500	11200	
15	5600	400	500	1500	11200	
16	6200	800	325	1500	10700	Border
17	6400	200	325	1500	10700	Legs
18	6800	400	1000	1000	11300	LX 3
19						Uncommissioned
20						Uncommissioned
21						Uncommissioned
22	7700	900	325	1500	10700	
23	7900	200	325	1500	10700	Border
24	8100	200	325	1500	10700	Legs
25						Uncommissioned
26						Uncommissioned
27	8700	600	1000	1000	11300	LX 4
28	9150	450	325	1500	10700	Legs
29	9500	350	500	1500	11200	
30	9800	300	500	1500	11200	
31	10100	300	325	1500	10700	
32	10300	200	325	1500	10700	Tabs
33	10600	300	325	1500	10700	Cyc
34	10800	200	325	1500	10700	

Rigging Points

RB1 (see drawing 4)

Beams at 3m centres running up and down stage. 11700mm above stage surface. Maximum capacity 235 kg/m including flying system.

HB2 (see drawing 4)

Beams above pit running at right angles to proscenium at 3m centres 1500kg each.

Roof Trusses (see drawing 4)

The bottom chord of each truss is rated for a one only point load of 1000kg

Drapes

House Curtain

Material: Super Velour
Colour: Garnet
French Action

Tabs

Material: Wool
Colour: Black pleated
French Action **2**

Legs

Material: Wool
Colour: Black pleated
4 sets

Borders

Material: Wool
Colour: Black pleated
4

Cyc

Material: Filled cloth
1

Access Equipment

A Snorkel UL32 Elevated Work Platform is available within the confines of the building.

Maximum platform height	9.7m	136kg capacity
Aluminium Extension Ladder	4.2m-7.78m	150kg capacity
Aluminium Step ladder	4.5m	150kg capacity
Fibre Glass Step ladder	3.6m	150kg capacity
Fibre Glass Step/extension ladder	2.4m-4.11m	150kg capacity

Power supply, circuits

Temporary Power Supply

Two supplies are located on the prompt side of stage

1x 100Amp

1 x100Amp "green power"

Electrician required to connect and disconnect during bump in/out

"Green Power"

"Green Power" refers to dedicated sound power separated from other power supplies at initially switch board. "Green Power" GPOs are located throughout the building.

Theatre Lighting Circuits

Position	Description	Distance from setting line	Throw to centre of setting line	10amp dimmable	20amp dimmable	10 amp non dim	Work light
Bridge 1	Circuited bar	4450	10970, 66°	24	2	2	1
Bridge 2	Circuited bar	9100	13500, 48°	30		2	
Bridge 3	Circuited bar	18500	21170, 29°	16		2	
Box Boom PS	Circuited bar	3750	13400, 41° 10000, 34°	6		1	
Box Boom OP	Circuited bar	3750	13400, 41° 10000, 34°	6		1	
Far Boom PS	Circuited bar	8500	14300, 14° 16400, 28°	4		1	
Far Boom OP	Circuited bar	8500	14300, 14° 16400, 28°	4		1	
LX 1	Circuited bar	1300	Flown	31	4		1
LX 2	Circuited bar	4000	Flown	31	4		1
LX 3	Circuited bar	6800	Flown	31	4		1
LX 4	Circuited bar	8700	Flown	31	4		1
PS fly gallery	Patch panel			6		1	
OP Fly gallery	Patch panel			6		1	
DSPS	Patch panel			6		1	
USPS	Patch panel				6	1	
DSOP	Patch panel			6		1	
USOP	Patch panel				6	1	
Pit PS	Patch panel			2		1	
TOTALS				240	30	17	5

Lighting Equipment

Standard rig

Control

Strand Classic Palette
w/riggers control

Dimmers

Bytecrafft Solution 12 10amp
132 dimmers
(24 hard switchable to non dim)
Bytecrafft Solution 6 20Amp
12 dimmers

Profiles

Selecon Pacific 5.5/13 1k **10**
Selecon Pacific 12/28 1k **24**
Selecon Pacific 23/50 1k **24**

Gobo Holders

Size M **12**
Size A **18**

Fresnels

Selecon Arena 2k **15**
Selecon Rama HP 1.2
45

PARS

Kupo Multi PARS **16**

Floods

Selecon Aurora 4 way **8**

Follow Spots

Selecon Rua 9/16 **2**

Effects

Unique 2 Hazer **1**

Sound Equipment

Control

Yamaha M7CL 48

Speakers

JBL VRX 900 series three clusters
(L, R) including 2 x 918SP subs

Foldback

PRX512 **8**

Microphones

Shure SM58 **5**
Shure SM57 **8**
Shure SM81-LC **1**
Shure SM94-LC **2**

Playback

Denon DN-C635

Projection

Projector Sony VPLFX52
Screen Screen Technics
rear projection
Scanner/scaler Kramer VP 727
DVD Panasonic DVD553

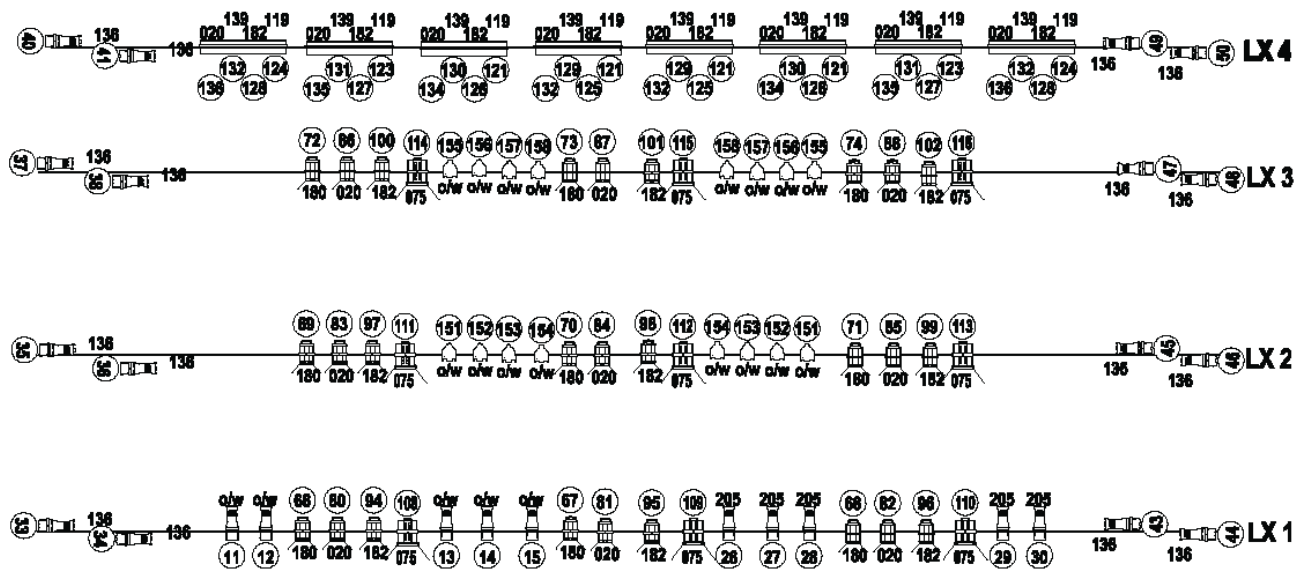
Talkback

Jands Ezicom E400 master station
8 Headsets and Belt packs

Stage Managers Desks

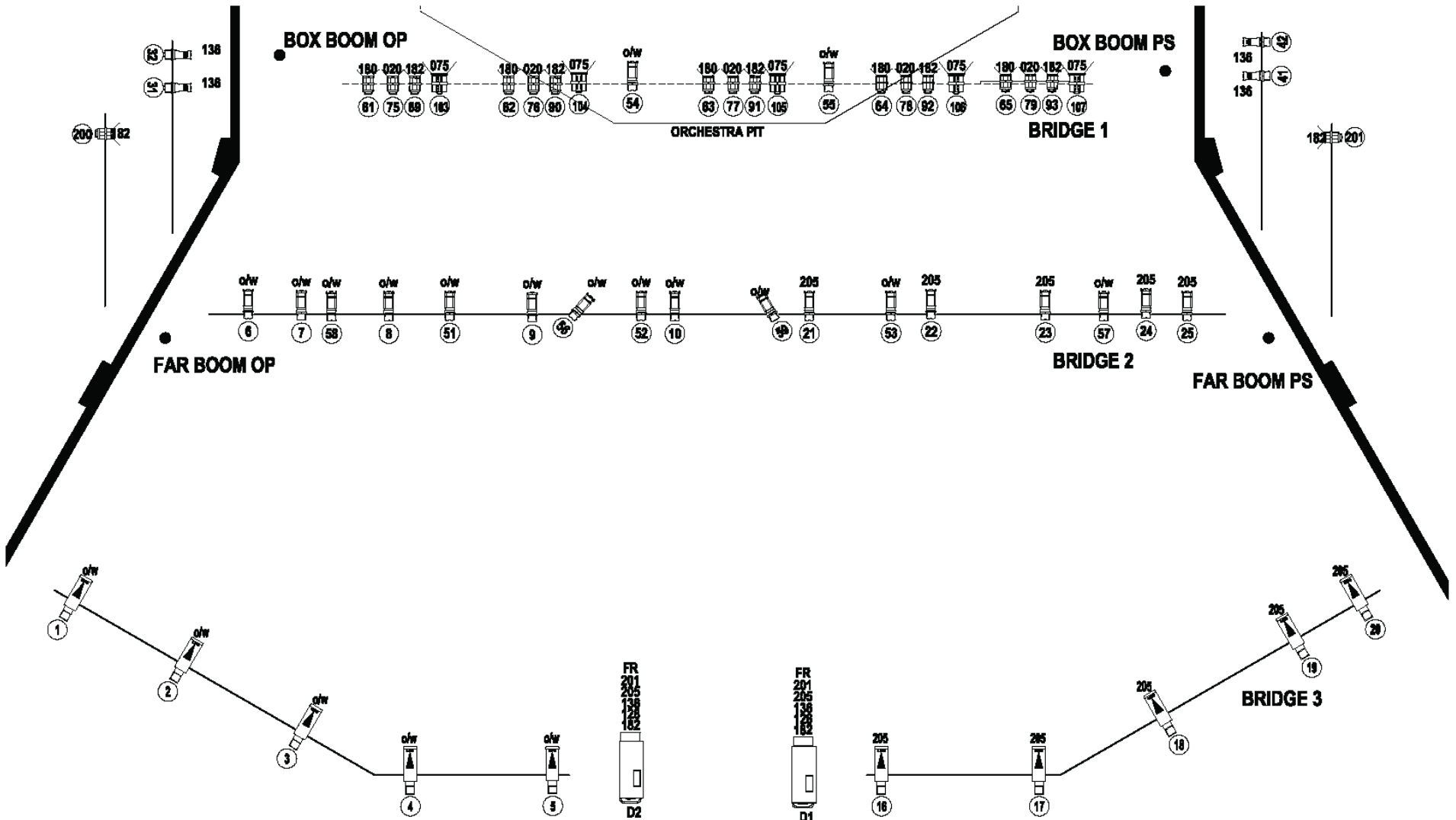
Each venue has its own desk with paging
and talk back capability

30	
31	CYC
32	TARP
33	
34	
35	
36	
37	
38	
39	
40	
41	
42	
43	
44	
45	
46	
47	
48	
49	
50	
51	
52	
53	
54	
55	
56	
57	
58	
59	
60	
61	
62	
63	
64	
65	
66	
67	
68	
69	
70	
71	
72	
73	
74	
75	
76	
77	
78	
79	
80	
81	
82	
83	
84	
85	
86	
87	
88	
89	
90	
91	
92	
93	
94	
95	
96	
97	
98	
99	
100	
101	
102	
103	
104	
105	
106	
107	
108	
109	
110	
111	
112	
113	
114	
115	
116	
117	
118	
119	
120	
121	
122	
123	
124	
125	
126	
127	
128	
129	
130	
131	
132	
133	
134	
135	
136	
137	
138	
139	
140	
141	
142	
143	
144	
145	
146	
147	
148	
149	
150	
151	
152	
153	
154	
155	
156	
157	
158	
159	
160	
161	
162	
163	
164	
165	
166	
167	
168	
169	
170	
171	
172	
173	
174	
175	
176	
177	
178	
179	
180	
181	
182	
183	
184	
185	
186	
187	
188	
189	
190	
191	
192	
193	
194	
195	
196	
197	
198	
199	
200	
201	
202	
203	
204	
205	
206	
207	
208	
209	
210	
211	
212	
213	
214	
215	
216	
217	
218	
219	
220	
221	
222	
223	
224	
225	
226	
227	
228	
229	
230	
231	
232	
233	
234	
235	
236	
237	
238	
239	
240	
241	
242	
243	
244	
245	
246	
247	
248	
249	
250	



LEGEND	
	Selecon Pacific 5.3/13
	Selecon Pacific 1228
	Selecon Pacific 20/80
	Selecon Aurora 4 way 1.23k
	Selecon Aurora 1P 2k Fresnel
	Selecon Beam 1k Fresnel
	Selecon RFP
	Kapa Shift PAR
	Channel Number

		VENUE		Theatre	
		TITLE		Standard Rig Stage	
SCALE	NTS	REVISION	A	DRAWN	Tweddle
PAGE SIZE	A4	DATE	Apr 08	©	BEC
DWG No					5
					of 7



LEGEND

	Belinee Pacific 2.0/13		Kupo Multi PAR
	Belinee Pacific 12/30		Belinee Azzans 4 way 1.25k
	Belinee Pacific 53/30		Belinee Rat
	Belinee Arena 1P 3k Prespal		Gnd
	Belinee Ritma 1k Prespal		Channel Number



VENUE		Theatre					
TITLE		Standard Rig FOH					
SCALE	NTS	REVISION	A	DRAWN	Tweedle	DRG No	6
PAGE SIZE	A4	DATE	Apr 08	© SEC		of 7	

Miscellaneous

Dressing rooms, Green Rooms

There are 2 large dressing rooms capable of taking 15 people each plus 2 small dressing rooms for 2 people each located behind the main theatre stage at stage level.

Each dressing room has a shower and toilets.

These dressing rooms service both venues.

Two rehearsal/dressing rooms for 8 to 10 people each are also located on the floor below with easy access to the orchestra pit. A single shower and toilet is located between these rooms.

Laundry facilities

Washing and drying facilities are located in the loading dock area.

Music Stands

Rat Conductor Stand	1
Rat Performer Stands	20